



Industrial Specialties Mfg.

An ISO 9001:2008 Certified Company

4091 S. Eliot St., Englewood, CO 80110-4396 • 303-781-8486 FAX: 303-761-7939 • www.industrialspec.com

Tubing Size 1/4" - 3/8"
1/4" Flow Thermal Plastic

40AC Series Couplings

These general purpose 1/4" flow size couplings are produced in a durable natural Acetal (POM) thermal plastic. They feature a thumb-latch release which provides a simple one hand operation. They are available in both valved and non-valved configurations. All 40AC couplings interconnect with all other 40PP and 40CB couplings as well as other similar industry thumb-latch type couplings.



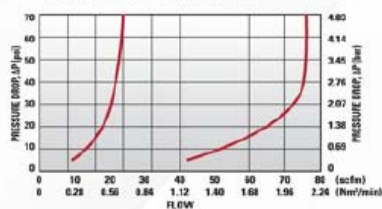
Performance Ratings:

- Operating Pressure: Vacuum to 120psi; (8.3bar)
- Temperature: -40°F to 180°F; (-40°C to 82°C)
- Flow Capacity: 1/4" Size

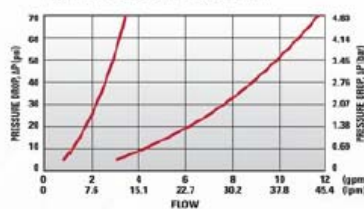
Materials & Construction:

- Bodies & Terminations: Acetal (POM)
- Internal Valves: Acetal (POM)
- Internal Valve Springs: 316 Stainless Steel
- O-rings: FDA & NSF Listed Grade Buna-N (others available)
- Thumb-latch: Stainless Steel
- External Springs & Pins: Stainless Steel

40AC Series Air Flow



40AC Series Water Flow



FLOW RATES

The data below shows liquid flow rates for LinkTech couplings. Each coupling combination was tested at 70°F (21°C).

C_v Values for 40AC Series Couplings

SOCKETS	40ACV-PB2-04	40AC-PB2-04	40ACV-PB2-06	40AC-PB2-06	40ACV-PB9-04	40AC-PB9-04	40ACV-PB9-06	40AC-PB9-06	40ACV-PB1-04	40AC-PB1-04	40ACV-PB1-06	40AC-PB1-06
40ACV-SB2-04	0.42	0.58	0.45	0.78	0.31	0.38	0.45	0.6	0.43	0.79	0.45	0.75
40AC-S2-04	0.52	0.95	0.7	1	0.38	0.39	0.55	0.87	0.65	0.95	0.65	1
40ACV-SB2-06	0.43	0.63	0.5	0.89	0.33	0.39	0.62	0.5	0.45	0.95	0.5	0.92
40AC-S2-06	0.53	0.95	0.8	1.4	0.38	0.39	0.57	1	0.7	1.4	0.73	1.4
40ACV-SB3-04	0.42	0.58	0.45	0.78	0.31	0.38	0.45	0.6	0.43	0.79	0.45	0.75
40AC-S3-04	0.52	0.95	0.7	1	0.38	0.39	0.55	0.87	0.65	0.95	0.65	1
40ACV-SB3-06	0.43	0.63	0.5	0.89	0.33	0.39	0.62	0.5	0.45	0.95	0.5	0.92
40AC-S3-06	0.53	0.95	0.8	1.4	0.38	0.39	0.57	1	0.7	1.4	0.73	1.4
40ACV-SB1-04	0.41	0.65	0.5	0.81	0.31	0.35	0.48	0.74	0.45	0.8	0.45	0.8
40AC-S1-04	0.56	0.84	0.83	1.4	0.35	0.4	0.58	1.04	0.75	1.4	0.78	1.4
40ACV-SB1-06	0.43	0.7	0.5	1.03	0.3	0.36	0.7	0.48	0.45	0.97	0.48	1
40AC-S1-06	0.57	0.84	0.82	1.4	0.35	0.4	0.6	1.05	0.75	1.4	0.75	1.4

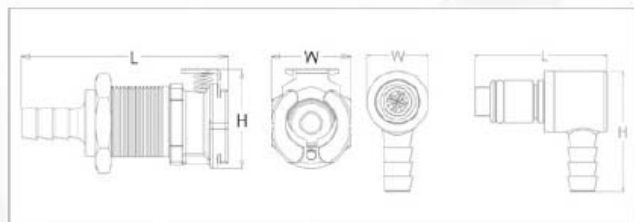
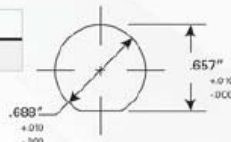
Specific coupling combination flow rates can be determined by using this formula:

$$Q = C_v \sqrt{\frac{\Delta P}{S}}$$

Q = Flow rate in gallons per minute
C_v = Average flow rates (see chart)
ΔP = Pressure drop across coupling (psi)
S = Specific gravity of liquid.

	PANEL OPENING	MAX PANEL THICKNESS	MIN PANEL THICKNESS
SOCKETS	See Drawing	0.5"	0.05"
PLUGS	0.688"	0.3"	0.05"

PANEL NUT HEX SIZE	PANEL NUT THREAD
13/16"	11/16" - 24 UNS



Reference Dimensions: L = Length, W = Width, H = Height

Worldwide Suppliers of Miniature Fluid and Pneumatic Circuitry Components